

A JAVAN FANTASY

The DXers View of Java

Bill Sparks

Java is a logical starting point for any Indonesian DX survey. It is not the largest island in the Indonesian archipelago by far, but it has the largest population. It was the center of government during the colonial period and has remained so since independence.

Java is a beautiful tropical island with many towering active volcanos. Geographers claim that 35% of the approximately 100 volcanos are active. Java is about 700 miles long from east to west and is 45 to 165 miles from north to south with high volcanic mountains in the center for the full length of the island. It is located between 6 degrees and 8 degrees south of the equator. My map shows the distance by road between Merak on the west coast on the Sunda Strait to Banyuwangi on the east coast Bali Strait to be 1170 kilometers or about 727 miles.

Jakarta, the national capital, is a separate administrative area similar to the District of Columbia in the U.S.A. It is known as Khusus Jakarta Raya.

The large administrative divisions of the island are Propinsi Jawa Barat (West Java); Propinsi Jawa Tengah (Central Java); Daerah Istimewa Yogyakarta, an area carved out of Jawa Tengah; and Propinsi Jawa Timur (East Java). The satellite island of Madura, just off of the north east coast of Java is an administrative part of Jawa Timur.

It is important to determine in which of these administrative provinces any Javan station that you log is located. When writing a reception report to the station, the province is normally included in the address.

Java's location is in both the western and central Indonesian time zones, but the line between western and central time has been stretched out to the east around the eastern end of Java and Bali so that all of Java is in the G.M.T. +7 hours western time zone. In Indonesian this time zone is called waktu Indonesia Bagian Barat. The 24 hour clock is in use throughout Indonesia.

For many centuries this island has attracted traders, migrants, and frequently colonial masters from India, Portugal, England, Islamic nations, and finally, the Dutch. We could also include the invading Japanese during World War II. The influence of these can be noted in the great variety of programs and music that DXers can enjoy over the short wave stations on the island of Java. Most often heard will be the Islamic call to prayers and Koranic recitals, Arabic-style music, the keroncong music brought in by the Portuguese, and, of course, the gamelan.

The importance of Java in Indonesian DXing is due to the numbers game which is so dear to the heart of most DXers. Over the years Java has been the center of short wave broadcasting in Indonesia. I have checked my records going back to 1934 and find that Java has been the source of 42% of my Indonesian stations logged. It has accounted for 38% of my Indonesian stations QSLed.

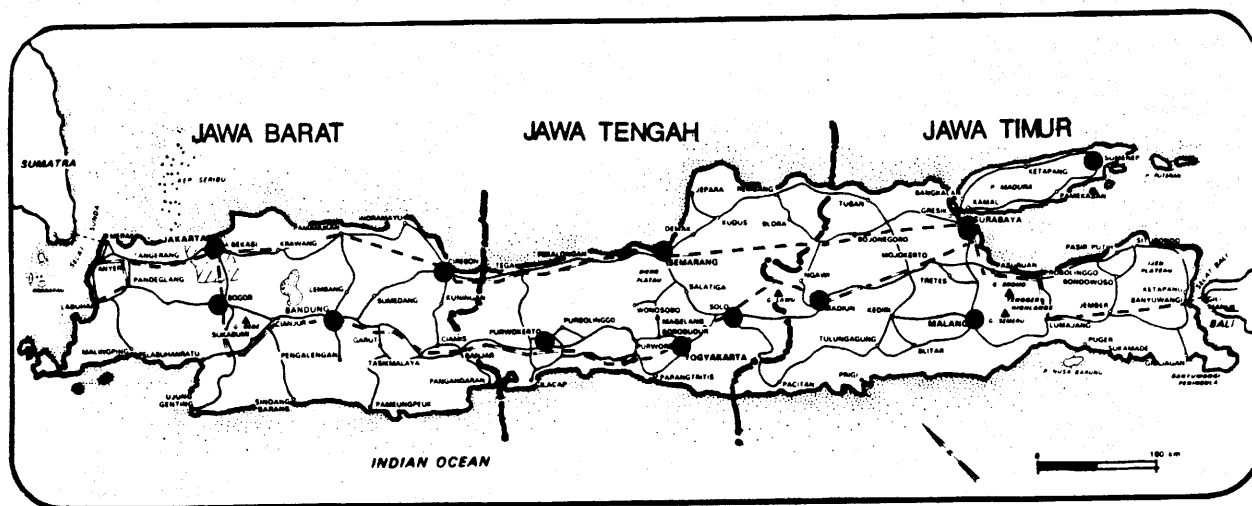
It is ironic that although Java leads other islands in the number of active short wave stations in recent years, at the present there are only three or four Javan stations that provide consistent reception in North America. They are the Radio Republik Indonesia stations in Jakarta, Yogyakarta, Surakarta and perhaps Bandung. There are many other RRI stations and unknown numbers of Radio Pemerinta Daerah (RPD) and other non-RRI stations that provide targets of moderate to very great difficulty for the dedicated Indonesian DXer.

In the beginning

Short wave broadcasting began during the late Dutch colonial period before World War II. All of the early stations were located on Java. NIROM, the Netherlands Indies Broadcasting Company Limited, started broadcasting on March 31, 1934. It soon had high frequency stations located in Batavia (now Jakarta), Surabaya and Bandung that were to provide reception for listener throughout all of Indonesia. These broadcasts were mostly in Dutch. There were some very low power stations providing local language service to the Indonesian population. This type of broadcasting service has been replaced by today's RPD's.

Short Wave Today

At the present time, as all Indonesian DXers know, the nationwide Radio Republik Indonesia system provides the signals most often heard from Java. But there are several RRI stations in Java that are extremely rare and difficult DX. In fact it is a problem to determine whether some of the stations are on the air. Transmitter and antenna breakdown is a frequent problem causing stations to go off the air for extended periods.



THE ISLAND OF JAVA,

Broadcasting in a hot, moist, tropical climate creates maintenance difficulties for even the more prosperous RRI stations. The smaller RPD stations in many cases are home brew and operating on a financial shoestring. So it is no wonder that there is constant change in these stations. Many operate with such low power or poor equipment that DXers located several thousand miles away have no way of determining if the station is off the air or if reception conditions are so poor that they are not coming through.

Attempting to draw up a definitive list of short wave broadcasters presently operating in Java which would include all of the RPD's is virtually impossible. Any such list would probably be out of date by the time that it was printed. Stations drop off the air and others return in rapid succession. Ace Indonesian DXer Ralph Perry and the Australians Geoff Cosier and Dave Foster have visited many of the stations in Java and listened to them close to the transmitter sites. They have reported that many of the RPD's simply do not know their exact frequency of operation. The wrong gelombang (wave length) is announced over the air or is quoted in their correspondence. These visiting DXers and others have attempted to obtain an "official" list of RPD and Kotamadya stations from the RRI headquarters in Jakarta only to be informed that no such list exists and that no attempt has been made to assign frequencies to these low power local stations.

Therefore in lieu of a complete listing of stations definitely known to be broadcasting from Java today, (which would be very short), I decided to make a complete review of my rather voluminous Indonesian files and to show what towns and cities in Java have had short wave broadcasters in operation during the last ten years or so. A statement of the present status of each will be provided if it can be determined.

One reason for such an approach to the problem is that many Indonesian stations are off the air for several years only to return at close to their former frequency after repairs or the installation of a new transmitter.

In describing the stations in Java, I have drawn upon the many reports that Ralph Perry made to the private DX club Numero Uno (NU) during his Indonesian travels and on the reports appearing in several back issues of Down Under DX Survey (DUDXS) issued in the early 1980's by Geoff Cosier and Dave Foster in Australia. Dave consumed much time and money in correspondence with known RPD's and suspected RPD's, the results of which were published in DUDXS #19 in 1982. I believe that Dave and Geoff will agree that seeing some of their past efforts on behalf of Indonesian DXers reprinted in Proceedings 1989 will be of more use to present DXers than having them remain in my files. So let us look at the many short wave broadcasters operating in Java during the 1980's.

Fortunately, Fine Tuning (FT) has had some recent reports from Indonesian DXer Aboe Thaliep of the Radio Listeners club of Indonesia. These reports have provided current information on some of the RPD stations and the more difficult RRI's.

Instead of an alphabetical arrangement or a listing by frequency, I will make a tour of Java with stops at each station. The map that I am using is a beautiful large color map of Java, Madura and Bali. 40 by 19½ inches with the west half of Java on one side and the east half, Madura and Bali on the other side. It is a Nelles Maps, Indonesia #5 by Nelles Verlag purchased at a Rand McNally map store.

For a detailed description of the cities and towns that we are visiting, I recommend the 1988, 4th edition of the Indonesian Handbook by Bill Dalton published by Moon Publications, a book that every Indonesian DXer will want.

My tour will be the story of the Javan RPD stations, which far out number the better heard RRI stations. Unfortunately the history of most of these favorite DX targets will be repetitious. When I completed my research, I was shocked at the large number of Javan RPD's that are now on medium wave only or appear to be inactive on SW. The RPD's should be classified as an endangered species! Fortunately, some of them that deserted short wave have returned. We can only hope that more will eventually return.

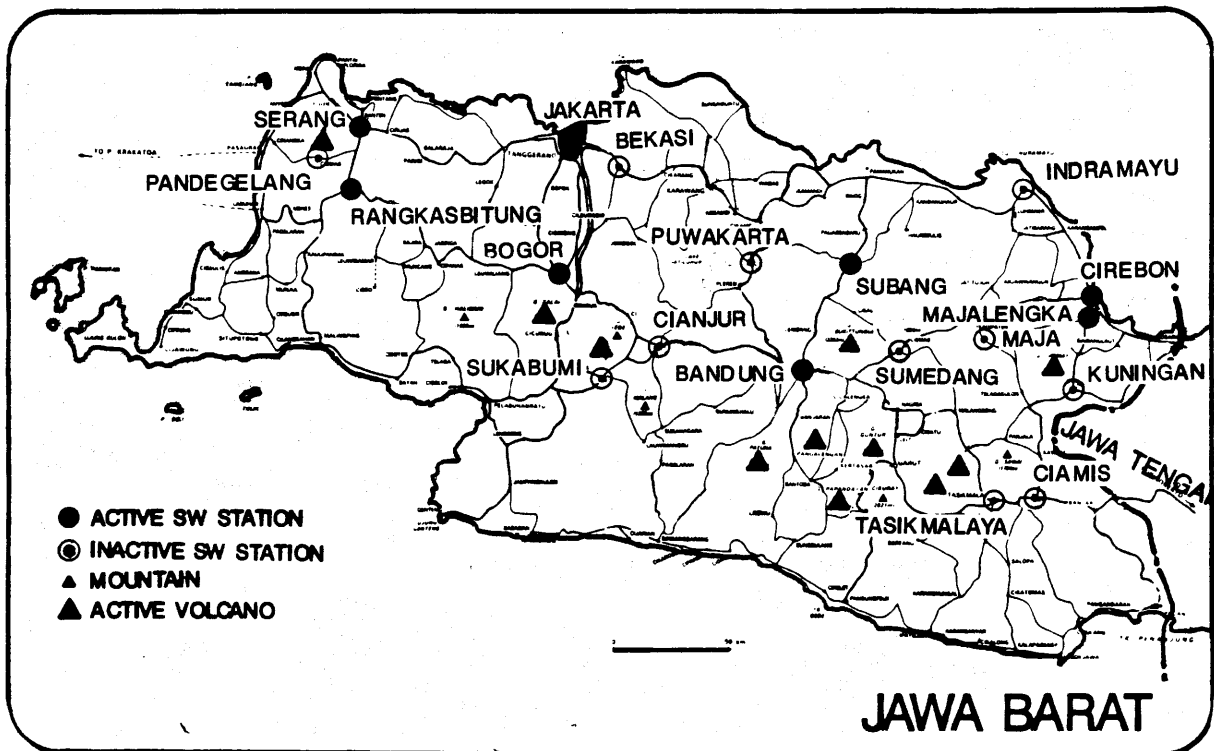
DAERAH KHUSUS JAKARTA RAYA

JAKARTA

As our Garuda Air line flight approaches the Jakarta airport, we can see the capital city of Indonesia, a sprawling city of over 8 million people. Here are the head offices and studios where the Program National of RRI originates, with the often heard Jakarta berita berita. The programs of the international service, Voice of Indonesia, also originate in Jakarta, but the transmitter locations aren't always on Java. RRI Jakarta has several high power transmitters on the high frequency bands as well as some lower power transmitters on the tropical bands. This is one station that DXers should have no problems hearing. The schedule and frequencies listed in WRTH are accurate except possibly for 6045. The most consistent reception of Program National in California has been during the 1000 - 1705 segment with 7270, 9680, 11770 and 11865 all heard well at times. There is usually some co-channel QRM. The strongest frequency seems to be 11865. The tropical band frequencies of 3277 and 4774 can be heard on mornings of good propagation. The listed 120 meter band frequency is sometimes heard in Australia, but the 120 meter Indonesians have not been making it to my QTH in California. The listed frequency is 2307. I have heard RRI Jakarta on 6045 only three or four times. I believe that this frequency is not active at present. There is no signal there even when the frequency is clear of QRM.

Above Thaliep has reported some Jakarta stations between 2340 and 2600 which apparently have not been heard outside of Java and could be amatir or unofficial stations. Several years ago there was an Indonesian Air Force station, Radio Angkatan Udara, on 11903. It was a good verifier with replies in English. However, the military stations appear to have closed down.

JAWA BARAT



BEKASI

Before we start our trip around Jawa Barat by going to the west coast, we make a short detour a few miles to the east of Jakarta to Bekasi. There was a 120 meter band station here, RKPDT2 Bekasi on 2405 in 1983. It is no longer active.

SERANG

Our tour now takes us west along highway 25 toward the ferry across the Sunda Strait to Sumatra. We arrive at the small town of Serang which had an active station until quite recently. It is RDK Serang on 3101.7. I have heard it through QRM a few times in 1983. It is still listed in the DSWCI Tropical Bands Survey (TBS),

but I haven't seen any recent loggings. This is a good frequency to watch.

PANDEGELANG

Our next stop a short distance from Serang south on highway 2 is at the foot of Mt. Karang. It is the small town of Pandegelang, said to be one of the neatest towns on Java. RDK Pandegelang was heard on 3347 several years ago, but its present status is unknown.

RANGKASBITUNG

The trip to Rangkasbitung takes us due west from Pandegelang to the upper reaches of the Ujung River and through the territory of the Badui people. RPKDT2 Lebak (named for the Kabupaten of Lebak) was heard fairly well and verified on 3421 about ten years ago. Then it left this frequency and hasn't been reported since. FT very recently had a report from Aboe Thaliep that a RDK Lebak is now on 3385, from 0800 to 1700 UTC. Sad to say, this is an impossible frequency for North America reception due to heavy QRM. It is nice to hear that some of the RPD's are returning to SW even if we can't hear them all. I note that TBS 1988 lists this station on 3458.2, nominal 3385.

BOGOR

We continue east on highway 2 along the edge of the central volcanic range to Bogor, a city of 250,000 due south of Jakarta and much cooler than Jakarta. Here is the former official residence of the Dutch governors during the colonial period and a world renowned botanical garden. As for SW broadcasting, Bogor has an "on again" "off again" history, and at present it may be off. RRI Bogor has broadcast on various spots in the 80 meter band for years. It was off for a long time, then returned in the early 1980's to 3960 (a miserable frequency for a low power station). Then it shifted down to 3953, where it was reported several times, and I finally heard it for a period of about 15 minutes on May 31, 1987, during the dawn peak. Unfortunately, I have not heard it since and it is reported to be inactive now. Let us hope it will be "on again" some time soon.

Two very recent reports indicate that Bogor may be on the air with irregular schedules on two low power RPD stations. RDK Bogor is reported on 2653.4. Radio STI de Bogor 2465v has been reported. No additional information is available now.

SUKABUMI

A trip over the mountains south from Bogor brings us to the town of Sukabumi, where there have been at least two active stations in recent years. There was considerable confusion among DXers as to the identity of these two stations until the Australians finally verified both of them. RDK Sukabumi, 3330 is the one most often heard in North America and may still be active. The other station eventually verified as RPKDT2 Sukabumi on 2522, but this station appears to be inactive now.

CIANJUR

Now we swing northeast through the mountains to the town of Cianjur. RPKDK Cianjur, 2325 was heard in Australia in the early 1980's, but not recently.

PURWAKARTA

A lengthy trip next takes us due east and then north through the mountains past Lake Jatiluhur to Purwakarta. Here RDK Purwakarta was once heard on 2466. Unfortunately, there have been no recent reports. Thaliep reports a Fox Radio, a new commercial station on 3170.

SUBANG

Our tour now takes us on a back country road east to Subang. Studio RDK Subang has been heard in Australia most recently on 2374 - 2376. In a QSL letter to Dave Foster for reception several years ago on 2370, V/S Deddy Hendartono said that improvements were being made on the station. An ID slogan is Studio Radio Benpas. The last word is a shortening of Benteng Pancasila or a Fortress of the Pancasila.

BANDUNG

From Subang, a hard trip through the central volcanic range brings us to Indonesia's third largest city, Bandung, with 1.7 million people and at least 50 universities and colleges. It is said to have been the favorite city of the colonial Dutch. In keeping with its size and importance, Bandung has had a long history of short wave broadcasting. NIROM had high power transmitters here in the 1930's. RRI Bandung 3204.4 is now the key RRI station for Jawa Barat. It is heard frequently in North America on this frequency. I used to hear it also on 2420. The Australians are still hearing it on 2420. There have been several other Bandung stations that appear to have deserted SW for MW. RPKDT2 Kotamadya Bandung was last reported on 3302 but apparently has been on MW since 1982. Another low power station, RDK Bandung was heard on 2503 but appears to be inactive on SW. We can't leave Bandung without mentioning Radio Institut Teknologi Bandung. The Bandung Institute of Technology is said to be the oldest, largest, and the most prestigious Indonesian technical universities. The university broadcast for several years on 6012 with a listed power of 1800 watts. The split frequency made it possible to hear this station in North America in spite of stations on 6010 and 6015. Unfortunately, this station seems to have left the air completely. It is not even listed in the current WRTH on the MW frequency quoted in my QSL letter.

SUMEDANG

Our trip now takes us east to Sumedang, surrounded by volcanic peaks. RPKDT2 Sumedang was heard on 2725-2728 and verified in North America, but may be inactive now.

MAJALENKA

From Sumedang it is a short trip to Majalenka. Here we look for RPKDT2 Majalenka and find that it was another of the super difficult 120 meter stations on 2345. Like so many others, it is now apparently only on MW.

INDRAMAYU

From Majalenka we travel down the Manuk River Valley to the north coast of Java to the Java Sea. Indramayu is a town said to have been influenced by a long Chinese presence. RPKDT2 Indramayu is another of the tough 120 meter DX targets. It has been heard on 2527 for several years and verified in Australia. The present status of the station is uncertain. Dave Foster reports correspondence from the station leading him to believe that it is only on MW. Thaliep has reported RPD Sutrada on 2630 located in Indramayu.

CIREBON

Back on highway 25 again, we travel southeast along the north coast to Cirebon. Here we find a coastal town that also has a long history of Chinese influence in the local art and architecture. There are nice beaches and the fishing is great. Cirebon's RRI station is more difficult for North American DXers than some of the Javan RPD's. It is on 120 meters, of course. RRI Cirebon has been on 2390 for years where it is sometimes heard in Australia. It is currently reported by Thaliep, so we can all hope for that morning when we have a nice quiet location with a lot of wire outside the window and a lot of luck inside by the receiver.

KUNINGAN

Now from Cirebon we move south to Kuningan at the base of lofty Mt. Ceremay where there are stone-age relics from peoples who lived near the mountain for thousands of years. RDK Kuningan was on 2485 and active in 1982. There are no recent reports.

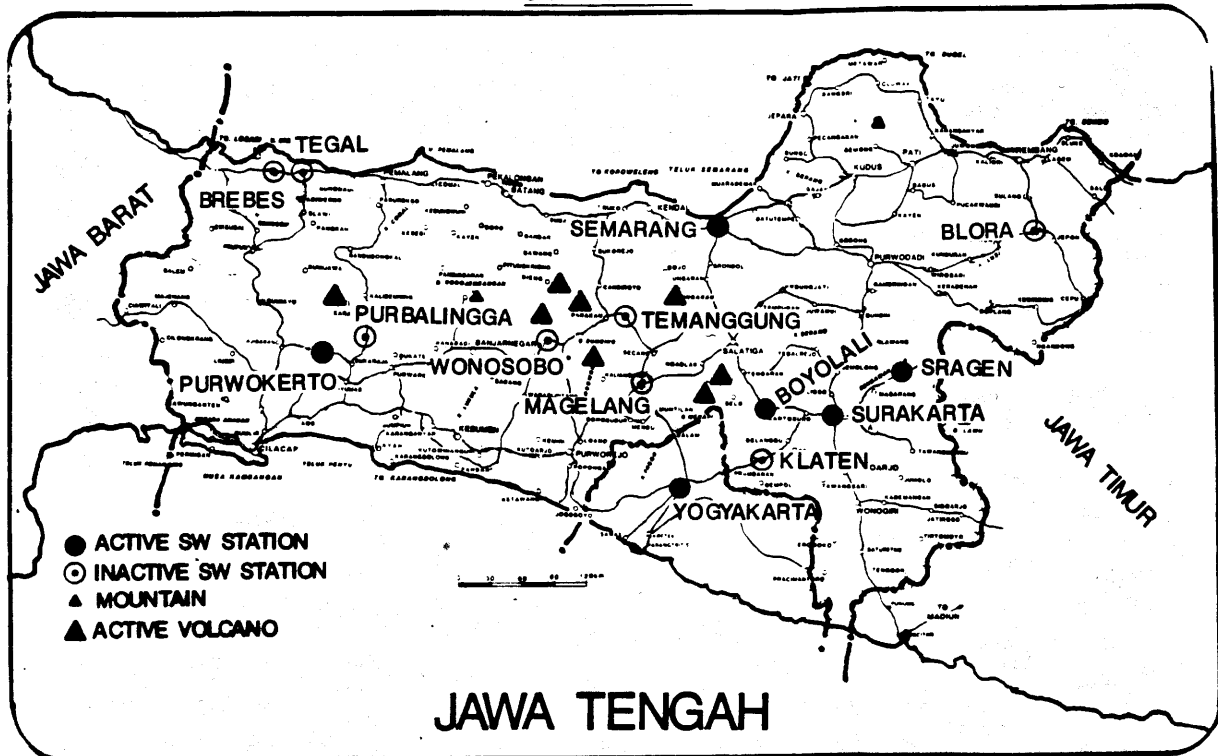
TASIKMALAYA

Continuing south through the mountains, we eventually arrive at the volcanic area of Tasikmalaya, surrounded by hot springs for any of us that need a mineral water cure. There are many art shops and woven rattan and pandanus articles for sale. RPD2 Tasikmalaya has been reported on both 2336 and 3911 in the past but like so many other RPD's, it seems to be inactive now.

CIAMIS

Back on highway 2, we turn east for the short trip to Ciamis. This is our last stop in Jawa Barat before we cross the line into Jawa Tengah. It appears to be the same old story on RPKDT2 Ciamis. It has been reported in Australia on 4053 in the early 1980's but no recent reports are available.

JAWA TENGAH



BREBES and TEGAL

From Ciamis we return to the north coast, then east along the Java Sea on route 25 into the province of Jawa Tengah. First stop is Brebes. Here RPDT2 Brebes was on 3105, but reportedly left SW for MW in the early 1980's. Continuing east-erly along the Java Sea, it is only 15 Km. from Brebes to Tegal. Here too we find that RSPD Kotamadya Tegal deserted 2690 for MW.

PURWOKERTO

In the hope of finding an active SWBC station, we turn south from Tegal through the mountains. After a long trip we enter Purwokerto, where our luck changes. To the north is 3,428 m. high Mt. Slamet. The scenery is great, but more im-
portantly, we have found an active RRI here! It is not heard outside of Indonesia very often because of its frequency. RRI Purwokerto is now being heard on 2470 where it has recently been reported by Aboe Thaliep. It was formerly on 2270.

PURBALINGGA

It is about 21 Km. east to Purbalingga. RSPDT2 K Purbalingga was on 2893, but it too appears to have deserted SW for MW.

WONOSOBO

Our route now returns to highway 2 in the central part of the island and up the Serayu River Valley. As we move up into the mountains, our next stop is Wonosobo where RSPKDT2 Wonosobo has been heard on 3312 and was still listed in TBS until about two years ago.

TEMANGGUNG

Continuing on highway 2 up the Serayu River Valley we go through a high moun-
tain pass to Temanggung. RPDT2 Temanggung has been logged and verified in North America on 3155 but not reported recently. It is possibly inactive.

MAGELANG

We circle the east side of Mt. Sumbing for the short trip to Magelang. Once again we find that RSPDKDT2 Magelang, 2942 has deserted SW for MW.

SEMARANG

From Magelang we go back up to the north coast to Semarang, the administra-
tive capital of Jawa Tengah. It is a busy harbor city and commercial center of 1.2 million with a large Chinese population. Here we find an RRI outlet that can be heard in North America. RRI Semarang is best heard on 3935 on mornings when the ham activity is low. It is heard at times in Australia on 2490 where there is less QRM from the Chinese station.

BLORA

We head east again from Semarang for the long trip to Blora. RSPDT2 Blora was active on 2624 until recently. Reports from Australia indicate that it is now only on MW.

SURAKARTA

Turning south from Blora, we climb through the mountains to Surakarta. It is called Solo by the local population of 500,000 and has been described as the least Westernized city in Java. It is a center of many tourist attractions. Surprise! One of the tourist attractions listed in Bill Dalton's Indonesia Handbook is RRI Surakarta! Page 325 of the 4th Edition of the Handbook has the following paragraph:

"Wayang shows are put on at RRI Bldg. near the R.R. station. **** Broadcast live all over C. Java, wayang orang performances are staged approx. two times per month on every other Wed., and wayang kulit every third Sat. of each month. Keep your eyes and ears open and always check with the tourist office about these excellent performances; don't believe anybody else. At RRI's entrance the month's upcoming events are posted. Performances at the RRI are at least as good as those put on in Tarman Sriwedari, better acoustics, and the dancers are generally younger."

As all Indonesian DXers know, RRI Surakarta is now a regular on 4931.6. It operates on a somewhat irregular schedule. For many years it alternated between 4931.6 and 4900v. A schedule is still listed for 4900 during times when North Amer-
can reception is not likely. It is also reported on 2439 by Australian DX'ers.

Ace DXer Ralph Perry visited the station during his 1979 trip through Indo-
nesia and confirms Bill Dalton's opinion of the station's wayang performances. Here is his most interesting description of RRI Surakarta.

"Upon a visit to this station, I learned that the 4900 local afternoon and A.M. (morning) transmitter runs 500 watts and is actually the second harmonic, in-
tentionally generated, on an old Japanese transmitter as big as a small refrige-
rator. They suppress the 2450 fundamental. RRI "Solo" is huge by local standards. Big old trees shade a large yard in front of a high, wide, yellow stone building. Meter high letters, "RRI" are mounted along the roof line and light up at night. Originally the station started out in 1945 with a few hundred watts and a studio now deep inside the present building. The site grew, room by room, according to tek-
nisi Setyoko. There are 250 employees, of which 30 are technical personnel. Four studios, a large auditorium (angkasa theater) with, amazingly, padded seats. Once a month, on a Saturday night, from about 8 P.M. to 5 A.M., this is the site of a wayang kulit performance. We stayed an extra night in Solo to attend the per-

formance put on by dalang from Magelang. We even tried our hands at whacking a gamelan instrument. Appropriately, the studio is within walking distance from the train station and is just off of Jalan Marconi. It is surrounded by typical Javanese standard hotels with rates at \$2.50 a night." (This was 1979 rates, remember.)

BOYOLALI

Next we go 19 Km. west to visit the small town of Boyolali where RSPDT2 Boyolali has been on 2878 where it has been logged and verified in North America. I have not noted any recent loggings, but it could still be active.

KLATEN

We back track a bit from Boyolali and turn southwest where we stop at Klaten. RSPDK Klaten was heard for years on 3175 and in the early 1980's on 2919. Possibly it is now inactive. Ralph Perry's amusing story of his visit to Klaten is worth repeating:

"IS THAT THE STATION? (Dropping in on RSPDT2 Kab. Klaten).

"Sometimes local government stations in Indonesia are as difficult to locate, in person, as they are to tune in a crowded band.

"My helpful host in Klaten, Jawa Tengah, directed me up the main road toward R. Siran Kabupaten Dati II Klaten. 'It is very near,' Tjang said. Near or not, I was soon asking and following pantomimed directions from Klaten townspeople. Eventually, I'd zeroed-in on a small courtyard fronting the local family planning clinic. This can't be it, I thought.

"But it was. An old Javanese woman directed me through a doorway at the end of a path next to the clinic. As quick as you could say warta berita, I was in the station.

'A few years ago there was a road widening and improvement project in Klaten', explained the teknisi, Mr. Daryoko, who'd built the homebrew station in an admirable solo effort. 'Many stores had their fronts chopped off because they were so close to the road. For us, the sign was temporarily removed. That was two years ago,' he said capsulizing why the station has no sign and why most of Klaten's main drag looks so brand new.

"Radio Siran Pemerintah Daerah Tingkat II Kab. Klaten, to use the entire name, was born on January 25, 1969. The station currently employs 40 persons - 10 operator/announcers (two of which are female), 20 administrative staff, and the rest for production of rural programs and news.

"Daryoko, a rotund and pleasant fellow who knows enough English slang to amuse a foreign visitor, made his entrance as I was examining the station's transmitters. 'Hello, DX Club, homebrew, hello, yes?' We all laughed. Fortunately, my Bahasa Indonesia (which is sparse) was better than his English. He explained that the two transmitters, each no bigger than a television console, ran 100 and 200 watts input, or 80 and 150 watts output. The smaller rig serves as a backup. He built the 'pemancers', the studio consoles and strung the dipole antenna in the courtyard all through selfteaching methods. The antenna is about 30 yards high with many radial guywires.

"We visited the studio auditorium. The room, measuring perhaps 12 feet by 25, the next morning would house 30 singing and dancing preschoolers for the early kiddie show, 15 gamelan musicians and a chorale of 7 singers.

"We retired to Daryoko's small office off the back side of the inner courtyard. There, over glasses of tea, we exchanged stories about DXing, Indonesia, propagation. Sitting on the desk was a report from Bob Yeo, of Australia. From the cover letter, I could quickly surmise it was a follow-up. With a smile, the teknisi promised me he would answer my esteemed colleague.

"Daryoko is an active ham, operating 10 watts in the 14mHz band daily around 1200 GMT. He belongs to Organisasi Amatir Radio Indonesia (ORARI), which has 29 members in Klaten alone. His call sign is YB20Q."

DAERAH ISTIMEWA YOGYAKARTA

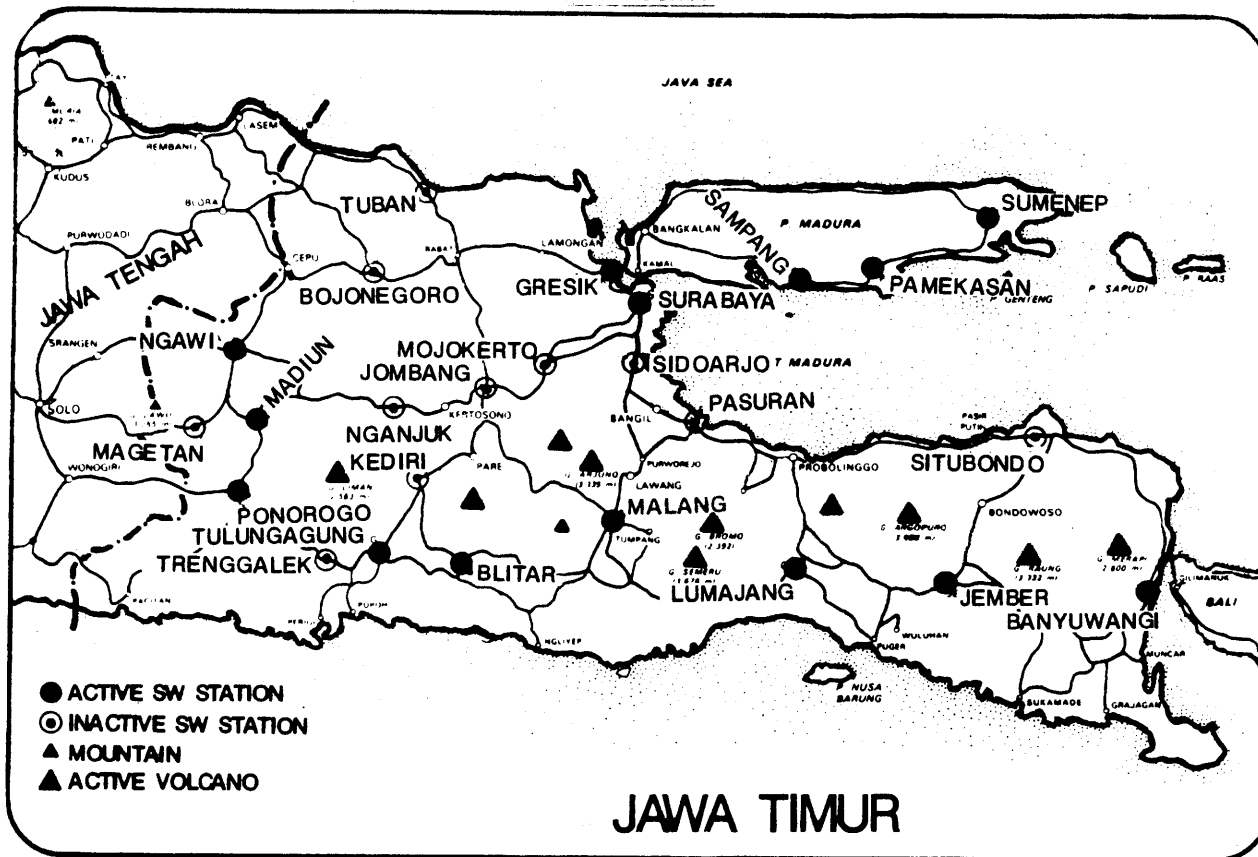
YOGYAKARTA

From Klaten we travel out of the hills to Yogyakarta, often called Yogya by the locals. Yogya is a separate administrative district, not a part of propinsi Jawa Tengah. RRI Yogyakarta, 5046 is the key RRI station for Nusantara Dua, the RRI network covering the whole of Java. It has been one of the more consistent Javan stations for North American DXers. There is an English news broadcast for tourists at 1130 UTC. The strong accent of the YL announcer makes it difficult to understand. Australian DXers also report the station on 2350. Ralph Perry also visited this station in 1979: "Yogya, 5047, visited this one, perhaps the most familiar of Indo stations. It sits squarely in front of the Yogya city dump, mounds and mounds of trash nearly obscure the building when viewed from across the river. RRI Yogya was inferior to RRI Surakarta in size, but had shinier floors".

SRAGEN

We leave Yogya and back track through Klaten and Solo and heading for our last stop in Jawa Tengah, Sragen. Here we find RSPDKDT2 Sragen, formerly heard on 2988. In QSL letters to Dave Foster and Geoff Cosier, the station operator, Fran's Soeradi, complained about the age of their transmitter at 250 watts and moved to 2970, where Dave says it has not been heard.

JAWA TIMUR



NGAWI

We now cross over into Jawa Timur, where we will find many stations spread out all over the province. Our route takes us north of magnificent Mt. Lawu to Ngawi. RPKDKT2 Ngawi is heard on 2985. I believe that it is still active on this frequency. Ralph Perry visited this station in 1979 and described it as "a dandy little station on Ngawi's main street. The antenna towers directly over a small square building. All employees wear snappy little uniforms. Power quoted was about 300 watts and never received any outside reports, although it has been operating since about 1970".

MAGETAN and MADIUN

Leaving Ngawi, we turn south between Mt. Lawu and magnificent Mt. Wilis. We pass near Magetan. RPKDKT2 Magetan was heard regularly on 3484, but now apparently is only on MW. We continue down the mountain easterly to Madiun, the home of one of the Jawa Timur RRI stations. It is not an easy catch, however. RRI Madiun is on 3286, where it is bothered by powerful utility QRM. It does not have a very powerful signal. Recent loggings by Thalip is evidence that the station is still active. Even more interesting is a report in FT of RPKDK Madiun on 3242.6, apparently a new RPD. The teknik who signed my QSL letter for RRI Madiun in 1982, Eko Budi Sutoyo, is also a ham operator. He included one of his ham QSL cards showing that his call is YC3MU. For a number of years, he has been the station manager at the rarest of the Irian Jaya stations, RRI Merauke.

PONOROGO

The route takes us south and eventually a circle around Mt. Wilis. The first stop is Ponorogo where RPKDT2 Ponorogo is reported to be irregular on 2645.

TRENGGALEK and TULUNGAGUNG

Turning easterly on highway 2 and heading for Blitar, we pass Trenggalek. RPKDKT2 Trenggalek was heard regularly in North America on 4601v quite a few years ago and was a difficult QSL. Around 1981, it too moved to MW. Rounding a rather steep curve, we see the whole range of magnificent active volcanoes which make up the eastern peninsula of Jawa Timur. Mt. Wilis (2200 m.) begins a string of active volcanoes rising steeply from the sea. They continue eastward, forming Bali and most of the islands of Nusa Tenggara. We note that towns and radio stations surround this dense line of volcanoes like pearls on a necklace. Although we could cut across the chain at several points, we decide to proceed along the south coast on highway 2 and return along the north. Now we pass Tulungagung and look for RPKDKT2 Tulungagung on about 4195. Ralph Perry said that they announced 71 meters (4225) but were actually heard on about 4195. Nothing has been heard of it lately.

BLITAR

Continuing another 31 Km. brings us to Blitar, the birth place of Sukarno, Indonesia's first president. It is a small town with one main street, but it is very popular with Indonesian DXers since it has an active RPD. RKPDT2 Blitar is currently being reported on 4087.5 by FTers. It is a good verifier, and often runs programs and ad strings which sound strangely Latin American.

MALANG

Now the trip takes us back into the mountains past mountain vacation resorts to Malang. Here is the home of another RRI station that is not often reported. It is the home of 270,000 Indonesians and is considered a resort city where it is always spring because it has a cooler climate than the rest of Jawa Timur. It was the center of ancient Hindu culture and still has many well preserved temples. RRI Malang's main frequency is 3381, but it is also listed for 2430, 2450 and 3836. It is a low power operation that makes reception in North America difficult. FT'er Thalieo reports recent reception on 3381, so it is currently active.

LUMAJANG

From Malang it is east on highway 2 again to Lumajang, where the happy DXer can find a live RPD on shortwave for a change. RKPDT2 Lumajang was first heard on 3097, then it moved up to 3137. It is currently heard in North America on 3239.7, and it is also sending out QSLs. For a while a Programa Dua was reported on 3418-3423.

JEMBER

Jember is the next stop east on Highway 2. RRI Jember was listed for years on 3321 where the overpowering Pyongyang on 3320 made reception in North America impossible. It has been inactive on this frequency for some time. A report from the station states that it is no longer on SW. There was an RPD on the air for a while. RKPDT2 Jember was reported in 1981 on 3171, but there is no recent information on this one. An unidentified station in Jember has recently been reported on 2382

BANYUWANGI

Continuing east on highway 2, we finally reach the east coast of Java with a view out over the straits to the island of Bali. Banyuwani (meaning nice fragrance) is a town located directly across the Strait of Bali from that fabled isle. RPDT2 Banyuwangi, 3504 certainly was a nice fragrance for many North American DXers as it was widely reported here and a good verifier. However, it has been one of the champion drifters among the Indonesians. It was most often heard around 3504 but drifted between 3485 and 3510. I don't know if it is still active.

SITUBONDO

As we continue to circle the very active Mt. Merapi, the highway turns west and becomes #25. It swings around the smoking cone and follows the north coast back westward to Situbondo. This is a town renowned for its bull fighting (bull against bull). RPDT2 Situbondo, 3444 was reported a few years ago but not recently.

PASURUAN

Highway 25 goes westward along the north coast by the Strait of Madura for a long distance passing Mt. Bromo to the city of Pasuruan. Once again we find a RPD station that is now only on MW. In 1980 RKPDT2K Pasuruan was on 3464.

SIDOARJO

Up north to Sidoarjo, we find a sea port and commercial fishing area. RPDT2 Sidoarjo, 3893 was heard in North America a few times but is now inactive on SW.

MOJOKERTO, JOMBANG, NGANJUK & KEDIRI

Sidoarjo is a great place to pause for a bit and take stock before finishing out our Javan Fantasy. There is much yet to see but little time and less money left. We begin to cut our losses. The remaining "pearls on the necklace" around the mighty mountain chain are now all black. To complete the loop, along the north slope of the range, we would pass through Mojokerto, Jombang, Nganjuk and Kediri all former sites of RPD stations. We have no time and just record the particulars in our journal:

RKPKDT2 Mojokerto, 2527; probably inactive.

RKPDK Jombang, 3472; MW only now.

RPDT2 Nganjuk, 4163; probably inactive.

RKPKMDT2 Kediri, 4141; MW only now.

We note that RPDT2 Nganjuk was well heard in North America (tough QSL) and is still listed in TBS. However, we have heard no recent reports of this station.

While resting here in Sidoarjo, we also note that the only two stations to broadcast from the northwest of Jawa Timur have also moved to MW. Their particulars:

RKPDT2 Bojonegoro, 3074 and 2412; MW only now.

RKPDK Tuban, 3762, MW only now.

SURABAYA

With the center and northwest of the province now silent on SW, we travel 23 Km north of Sidoarjo to the second largest city in Indonesia: Surabaya. It is the home of several SW stations heard regularly in North America. Bill Dalton describes the metropolitan area with a population of 3.6 million as a hot, dirty, and

noisy industrial hub on Java's swampy NE coast. It is the provincial capital of Jawa Timur and has the key RRI station for the province. The climate is hot and humid with a rainy season from November through April. It was founded on a spot where a legendary battle between a shark (sura) and a crocodile (buaya) took place. Bill Dalton's Indonesian Handbook has a long description of Surabaya, and one of the city maps very nicely marks the location of the RRI station on Jalan Pemuda. RRI Surabaya's main frequency is 3976, where ham QRM can cause problems. The Australian DXers report this station on 2377 also.

Probably the most consistently heard non-RRI station throughout North America is RKIP Surabaya on 4699 (Radio Khusus Informasi Pertanian), the Agricultural Information Radio. The station is located in Wonocolo on the southern approach to Surabaya. It is a good verifier.

RKPDT1 Jawa Timur, 3000 is being heard and verified regularly in North America. Ralph Perry visited this station and notes as follows: "3000 R. Kh. PDK1 Jawa Timur (also variously as Jatim and Jatimur) on the air since the late 1960's. The station is located in the government complex for the province. A stately pillared edifice of stone with a green courtyard and fountain. SW antenna is stretched from one side to the other, hovering over the grass. The Teknisi says the power was upped to 1 Kw and that they have been adjusting and improving the transmitter."

Another Kotamadya (municipal station) from Surabaya that was heard and verified frequently in North America was RKPDT2 Kotamadya Surabaya, also known as Radio Galora Surabaya, 3164. Unfortunately, this one apparently is only on MW now.

GRESIK

Before crossing the Eastern Narrows the short distance to Madura Island, the tour moves 16 Km. to the north for our last stop on the main island at Gresik. RSPKDT2 Gresik was heard on 2907 in 1982. I have not noted any recent reports on Gresik and can't tell if it is still active.

MADURA ISLAND

Madura is geologically a part of Jawa Timur. Bill Dalton states that the strait between the two islands flooded over only during the last ice age. It is an island said to be free of tourists and is famous for its women, its salt, and its bull races. Cattle raising is a big business there.

SAMPANG

After the short ferry ride from Surabaya to the west coast of Madura, the trip takes us along the Strait of Madura on the south coast of the island to Sampang. RKPDKT2 Sampang has been heard in the early 1980's on 3053-3055. I was never able to get an answer to my reception reports, however. It is no longer listed in TBS and is probably inactive.

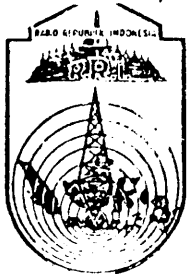
PAMEKASAN

Continuing easterly along the south coast brings us to the capital of Madura. It is a small, quiet, undeveloped town. RKPDT2 Pamekasan, 3452 is another RPD that appears to have deserted SW for MW.

SUMENEP

Sumenep, on the east coast of Madura ends our Javan fantasy on a positive note. Here is the only RRI station on this island. RRI Sumenep has been on 3355 for years. It is a tough log in North America due to heavy QRM from both utes and other broadcasters. Thaliep reports that it is business as usual for RRI Sumenep even if we are not hearing it on this side of the Pacific.

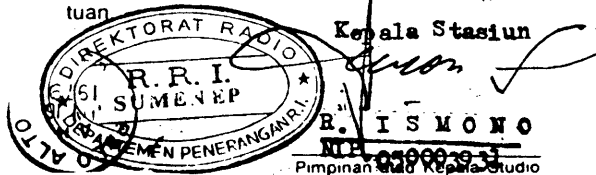
We go down to the docks in Sumenep and are able to rent space on one of the famous sailing prahus of the great seafaring Bugi tribe from Sulawesi. The beautiful blue and white prahu, a direct descendant of the 16th century corsairs of the Portuguese in these waters, is joining the monsoon fleet heading for fabled Nusa Tenggara. As we crowd on the deck among the chickens, the pigs and the pet boa constrictor, we are somewhat sorry that we filled our journal with notes only on the radio stations of Java, one of the most crowded and yet exotic islands on the planet.



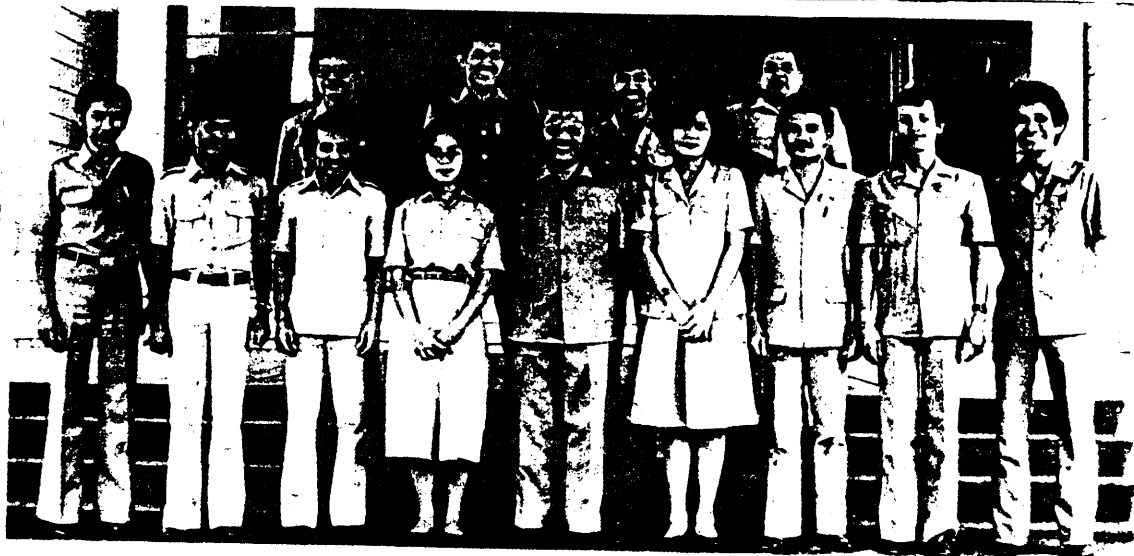
(Studio Cap)

Radio Republik Indonesia **SUMENEP**

Ini membenarkan laporan tuan dari Radio Republik Indonesia, Studio Sumenep siaran pada gelombang 89,45 meter atau frekwensi 3355 kHz, pada 17 Oktober 197 8 dari 19,27 sampai 20,00 waktu Indonesia Bagian Barat. Pemancar kuasa studio kami 1 kw. dengar delta match antena. Banyak terima kasih untuk laporan tuan

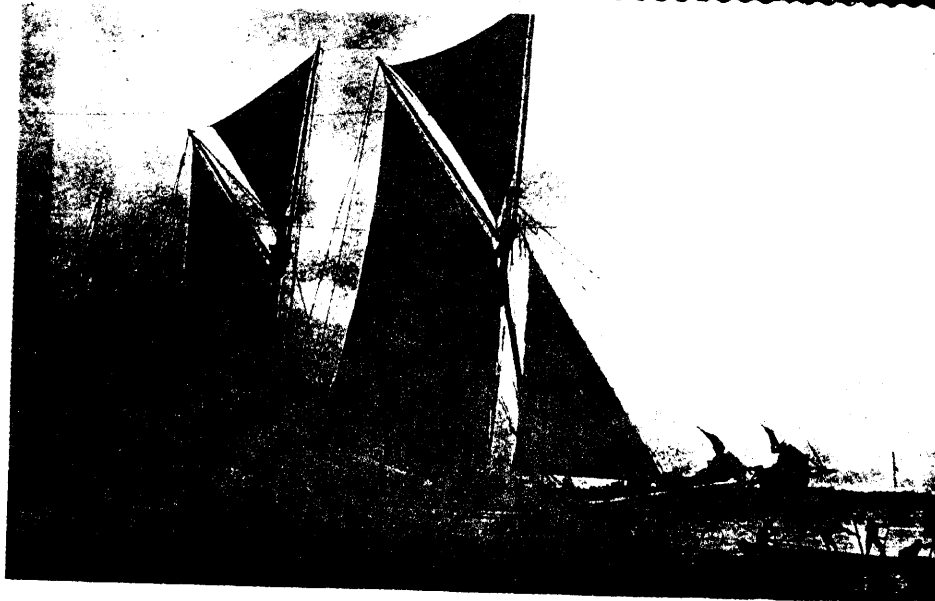
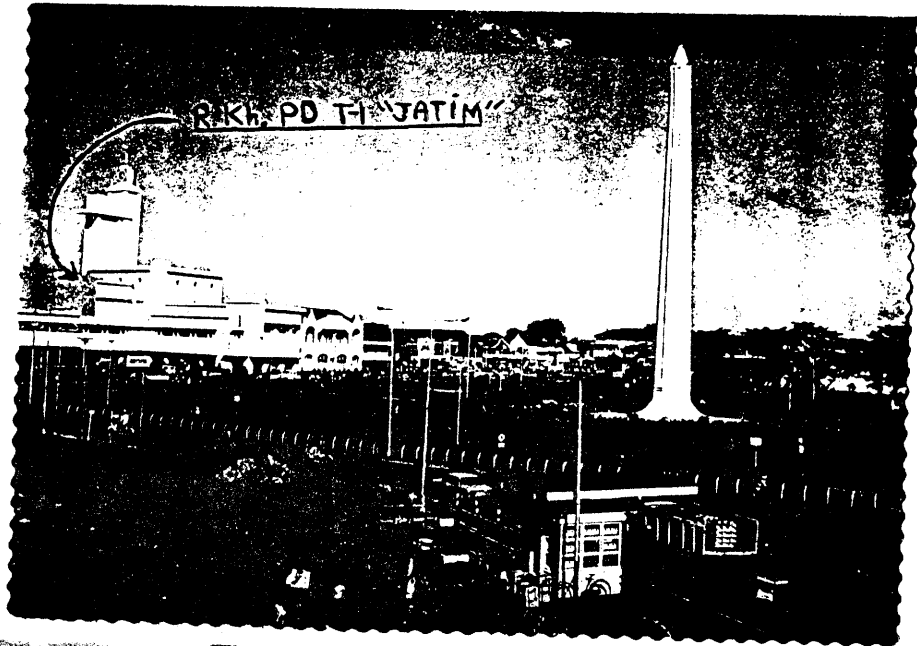


R. ISMONO
Pimpinan Studio Kepala Studio



PARA PENGASUH RKPD TK. I Jatim: Depan (dari kiri ke kanan): Suhardjono, Hariyanto IS, Nyoto Suharso, Tunik, Soehartono (Penanggung Jawab), Sumarsih, Mursid Masykur, Tris Wadono dan Suhardjo Bagus Tanto; Belakang (dari kiri ke kanan): Waluyo Subagiyo, Muntholip, Agus Suprijono dan Sulas Seputro.

RKPDT1 Jawa Timur
Thanks to Ralph
Perry



Bugi prahu



RRI Surabaya
Thanks to Kirk Allen

Personnel at RKIP Surabaya
Thanks to Kirk Allen

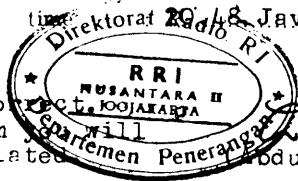


Dear Mr. William S Sperks.

We gratefully acknowledge your report on
 station : YDJ. of Radio Republik Indo-
 nesia.
 frequency : 5047 k.c.
 date : June 12, 1967.
 time : 20.48 Java time.

Remarks :

Your report is complete.
 Further news from
 will be highly appreciated.



Director,

(Modul Hamid).

Radio Republik Indonesia

Studio J O G J A K A R T A .



**RADIO SIARAN PEMERINTAH KABUPATEN
 DAERAH TINGKAT II GRESIK**

Jalan K.H. Wakhid Hasyim No. 9 Gresik.

Telpon 81002

Gelombang 103.6 Meter

Getaran 3151 KHZ



Bandung Institute of Technology

Indonesia

R. S. P. K. BOYOLALI

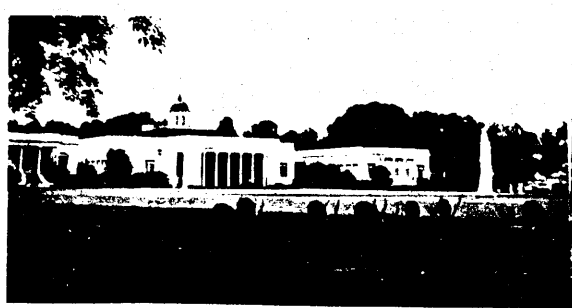
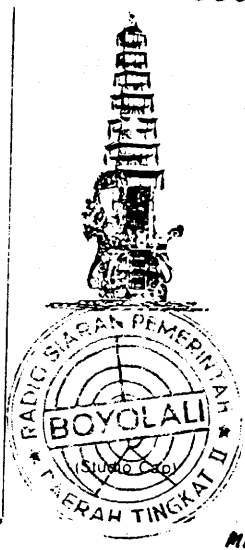
Ini membenarkan laporan tuan dari siaran pemancar kami pada gelombang 104.24 meter atau frekwensi 2878 kHz. pada 27 Juni 19780 dari 18.52 sampai 20,00 waktu Indonesia Bagian Barat.

Pemancar kami ada RSPK Boyolali di uasai oleh pemerintah dari Kab. Dati II Boyolali (kota propinsi atau daerah)

Kuasa pemancar studio kami 0.2 kw. dengan horizontal antena. Banyak terima kasih untuk laporan tuan.

SOELISTYARSOBA.
Pimpinan atau Kepala Studio

Maaf atas keterlambatan jawaban kami.



Two views of the Presidential Palace Bogor

swbc survey of jawa island

● the decade of the 1980's
bill sparks

FREQ	STATUS	STATION	CITY	PROPINSI	COMMENTS
2307	Active	RRI Jakarta	Jakarta	DKI Jakarta	Programa Nasional Best from 1000 - 1705
2325	Inacti	RKPKD Cianjur	Cianjur	Jawa Barat	Rarely Heard in NAM.
2336	Inacti	RPDT2 T'kmalaya	Tasikmalaya	Jawa Barat	Inactive in 1989
2345	MWonly	RPKDT2 M'lenka	Majalengka	Jawa Barat	Previously also on 3911
2350	Active	RRI Yogyakarta	Yogyakarta	DI Yoogya	Inactive on SW, but on MW in 1989 Key RRI station for Jawa Tengah //4931.6
2375v	Active	RDk Subang	Subang	Jawa Barat	
2377	Active	RRI Surabaya	Surabaya	Jawa Timur	// main freq of 3976
2382	Activ?	RPD?? Jember	Jember??	Jawa Timur	Reported from Australia 1989
2390	Active	RRI Cirebon	Cirebon	Jawa Barat	Rarely heard in NAM
2405	Inact?	RDk Bekasi	Bekasi	Jawa Barat	Inactive in 1989?
2412	MWonly	RPKDT2 B'negoro	Bojonegoro	Jawa Timur	MW only now Former freq is 3074
2420	Active	RRI Bandung	Bandung	Jawa Barat	RRI key station for Propinsi Jawa Barat. // to 3204.4 Rarely heard in NAM Alt. freq. Others inc:2450, 3836, 3381(main) //4931.6
2430	active	RRI Malang	Malang	Jawa Timur	
2439	Active	RRI Surakarta	Surakarta	Jawa Tengah	
2450	active	RRI Malang	Malang	Jawa Timur	This rarely heard in NAM Alt. freq. Others inc:2430, 3836, 3381(main)
2465v	Active	STI Bogor	Bogor	Jawa Barat	Very irregular in 1989
2466	Inact?	RDk Pwakarta	Puwakarta	Jawa Barat	Inactive in 1989?
2470	Active	RRI Puwokerto	Puwokerto	Jawa Tengah	Active. Rarely heard in NAM. Formerly on 2270
2485	Inact	RDk Kuningan	Kuningan	Jawa Barat	Inactive on SW in 1989
2490	Active	RRI Semarang	Semarang	Jawa Tengah	//3935 This rarely heard in NAM Inactive in 1989
2522	Inacti	RPKDT2 Sukabumi	Sukabumi	Jawa Barat	Inactive in 1989
2527	MWonly	RPKDT2 I'ramayu	Indramayu	Jawa Barat	Inactive on SW?, on MW in 1989
2527	Inacti	RPKDT2 M'kerto	Mojokerto	Jawa Timur	
2624	MWonly	RSPDT2 Blora	Blora	Jawa Tengah	MW only now
2630	active	RPD Sutradra	Indramayu	Jawa Barat	89 report from Jawa
2645	Active	RPKDT2 Ponorogo	Ponorogo	Jawa Timur	Very irr. schedule
2653.4	Active	RDk Bogor	Bogor	Jawa Barat	Very irregular in 1989
2690	MWonly	RSPD Kotamadya Tegal	Tegal	Jawa Tengah	Inactive on SW since early 1980's. Now on MW
2725+	Inact?	RPKDT2 Sumedang	Sumedang	Jawa Barat	Inactive(?) on SW in 1989
2878	Activ?	RSPDT2 Boyolali	Boyolali	Jawa Tengah	Unsure if active in 1989
2893	MWonly	RSPDT2K Purbalingga	Purbalingga	Jawa Tengah	Believe this now MW only
2907	Inact?	RSPKDT2 Gresik	Gresik	Jawa Timur	Believe inactive
2919	Inacti	RSPDK Klaten	Klaten	Jawa Tengah	Inactive
2942	MWonly	RSPKDT2 M'lang	Magelang	Jawa Tengah	MW only now
2985	Active	RKPKDT2 Ngawi	Ngawi	Jawa Timur	
2988	Activ?	RSPKDT2 Sragen	Sragen	Jawa Tengah	Station claims 2970 now. Unheard
3000	Active	RKPKDT1 Surabaya	Surabaya	Jawa Timur	Rumored to leave SW. Rept'd. here in 1989
3054v	Inact?	RKPKDT2 Sampang	Sampang, Madur	Jawa Timur	Believe inactive
3101.7	Activ?	RDk Serang	Serang	Jawa Barat	Active in 1989?
3105	MWonly	RPDT2 Brebes	Brebes	Jawa Tengah	Inactive on SW since early 1980's. Now on MW
3155	Inact?	RPDT2 T'gungung	Temanggung	Jawa Tengah	Believe inactive in late 1980's
3164	MWonly	RKPKDT2 Kota'dya Surabaya	Surabaya	Jawa Timur	MW only now. AKA: Radio Galora Surabaya
3170	active	Fox Radio	Puwakarta	Jawa Barat	89 report from Jawa
3171	Inacti	RKPKDT2 Jember	Jember	Jawa Timur	Not reported since 1981
3204.4	Active	RRI Bandung	Bandung	Jawa Barat	RRI key station for Propinsi Jawa Barat. Heard widely in NAM
3239.7	active	RKPKDT2 Lumajang	Lumajang	Jawa Timur	Former freq inc:3097,3137,3420
3242.6	Active	RKPKD Madiun	Madiun	Jawa Timur	Now in 88/89
3277	Active	RRI Jakarta	Jakarta	DKI Jakarta	Programa Nasional Best from 1000 - 1705
3286	Active	RRI Madiun	Madiun	Jawa Timur	
3302	MWonly	RPDT2 Kotamadya Bandung	Bandung	Jawa Barat	Inactive of SW since 1982. Now on MW
3312	Inact?	RSPKDT2 W'sobo	Wonosobo	Jawa Tengah	Believe Inactive since mid-1980's
3321	Inacti	RRI Jember	Jember	Jawa Timur	Not on SW now
3330	Activ?	RDk Sukabumi	Sukabumi	Jawa Barat	Active in 1989?
3347	Inact?	RDk Pandegelang	Pandegelang	Jawa Barat	Inactive in 1989?
3355	Active	RRI Sumenep	Sumenep, Madur	Jawa Timur	Active, but rarely heard in NAM. Co-chan QRM!!!
3381	active	RRI Malang	Malang	Jawa Timur	Main freq. Others inc:2430, 2450, 3836
3421	Inact?	RPKDT2 Lebak	Rangkasbitung	Jawa Barat	Inactive? Also on 3385(?), 3458.2(?) in '89
3444	Inacti	RPDT2 Situbondo	Situbondo	Jawa Timur	No reports in recent years
3452	MWonly	RKPKDT2 P'kasan	Pamekasan, Mad	Jawa Timur	MW only now
3472	MWonly	RKPKD Jombang	Jombang	Jawa Timur	MW only now
3472	MWonly	RKPKD Jombang	Jombang	Jawa Timur	MW only now
3484	MWonly	RKPKDT2 M'tan	Magetan	Jawa Timur	MW only now
3504vv	Activ?	RPDT2 B'uwangi	Banyuwangi	Jawa Timur	May still be active. Var. 3485-3510!
3762	MWonly	RKPKD Tuban	Tuban	Jawa Timur	MW only now
3836	active	RRI Malang	Malang	Jawa Timur	Alt. freq. Others inc:2430, 2450, 3381(main)
3893	Inacti	RPDT2 Sidoarjo	Sidoarjo	Jawa Timur	Inactive now
3911	Inacti	RPDT2 T'kmalaya	Tasikmalaya	Jawa Barat	Inactive in 1989 Previously also on 2336
3935	Active	RRI Semarang	Semarang	Jawa Tengah	//2490
3953	Inact?	RRI Bogor	Bogor	Jawa Barat	Inactive since 1987???
3976	Active	RRI Surabaya	Surabaya	Jawa Timur	// rarely heard 2377
4053	Inacti	RPKDT2 Ciemis	Ciemis	Jawa Barat	Inactive since early 1980's
4087.5	Active	RKPKDT2 Blitar	Blitar	Jawa Timur	
4141	MWonly	RKPKMDT2 Kediri	Kediri	Jawa Timur	

● swbc survey of Jawa Island
the decade of the 1980's
bill sparks

FREQ	STATUS	STATION	CITY	PROPINSI	COMMENTS
4163	Activ?	RPDT2 Nganjuk	Nganjuk	Jawa Timur	Unsure if active now
4195	Inact?	RKPKDT2 T'gung	Tulungagung	Jawa Timur	Inactive in late 1980's???
4601v	MWonly	RKPKDT2 T'galek	Trenggalek	Jawa Timur	MW only since early '80's
4699v	Active	RKIP Surabaya	Surabaya	Jawa Timur	R. Khusus Informasi Pertanian
4774	Active	RRI Jakarta	Jakarta	DKI Jakarta	Programa Nasional Best from 1000 - 1705
4900	Active	RRI Surakarta	Surakarta	Jawa Tengah	Low power in mornings
4931.6	Active	RRI Surakarta	Surakarta	Jawa Tengah	//rarely heard 2439
5047	Active	RRI Yogyakarta	Yogyakarta	DI Yogya	Key RRI station for Jawa Tengah // rarely heard 2350
6012	Inacti	R. ITB Bandung	Bandung	Jawa Barat	Inactive university station
6045	Active	RRI Jakarta	Jakarta	DKI Jakarta	Programa Nasional Believed Inactive
7270	Active	RRI Jakarta	Jakarta	DKI Jakarta	Programa Nasional Best from 1000 - 1705
9680	Active	RRI Jakarta	Jakarta	DKI Jakarta	Programa Nasional Best from 1000 - 1705
11770	Active	RRI Jakarta	Jakarta	DKI Jakarta	Programa Nasional Best from 1000 - 1705
11865	Active	RRI Jakarta	Jakarta	DKI Jakarta	Programa Nasional Best from 1000 - 1705
11903	Inacti	R. Angkatan Udara	Jakarta	DKI Jakarta	Usually best freq for Prog. Mas. Indonesian Air Force station. Inactive in 1989

only stations believed active in 1989

2307	Active	RRI Jakarta	Jakarta	DKI Jakarta	Programa Nasional Best from 1000 - 1705 Rarely heard in NAM.
2350	Active	RRI Yogyakarta	Yogyakarta	DI Yogya	Key RRI station for Jawa Tengah //4931.6
2375v	Active	RDK Subang	Subang	Jawa Barat	
2377	Active	RRI Surabaya	Surabaya	Jawa Timur	// main freq of 3976
2382	Activ?	RPD?? Jember	Jember??	Jawa Timur	Reported from Australia 1989
2390	Active	RRI Cirebon	Cirebon	Jawa Barat	Rarely heard in NAM
2420	Active	RRI Bandung	Bandung	Jawa Barat	RRI key station for Propinsi Jawa Barat. // to 3204.4 Rarely heard in NAM
2430	active	RRI Malang	Malang	Jawa Timur	Alt. freq. Others inc:2450, 3836, 3381(main)
2439	Active	RRI Surakarta	Surakarta	Jawa Tengah	//4931.6 This rarely heard in NAM
2450	active	RRI Malang	Malang	Jawa Timur	Alt. freq. Others inc:2430, 3836, 3381(main)
2465v	Active	STI Bogor	Bogor	Jawa Barat	Very irregular in 1989
2470	Active	RRI Puwokerto	Puwokerto	Jawa Tengah	Active. Rarely heard in NAM. Formerly on 2270
2490	Active	RRI Semarang	Semarang	Jawa Tengah	//3935 This rarely heard in NAM
2630	active	RPD Sutradra	Indramayu	Jawa Barat	89 report from Jawa
2645	Active	RKPD2 Ponorogo	Ponorogo	Jawa Timur	Very irr. schedule
2653.4	Active	RDK Bogor	Bogor	Jawa Barat	Very irregular in 1989
2878	Activ?	RSPDT2 Boyolali	Boyolali	Jawa Tengah	Unsure if active in 1989
2985	Active	RKPKDT2 Ngawi	Ngawi	Jawa Timur	
2988	Activ?	RSPDKT2 Sragen	Sragen	Jawa Tengah	Station claims 2970 now. Unheard
3000	Active	RKPD1 Surabaya	Surabaya	Jawa Timur	Rumored to leave SW. Rept'd. here in 1989
3101.7	Activ?	RDK Serang	Serang	Jawa Barat	Active in 1989?
3170	active	Fox Radio	Puwakarta	Jawa Barat	89 report from Jawa
3204.4	Active	RRI Bandung	Bandung	Jawa Barat	RRI key station for Propinsi Jawa Barat. Heard widely in NAM
3239.7	active	RKPD2 Lumajang	Lumajang	Jawa Timur	Former freq inc:3097,3137,3420
3242.6	Active	RKPK Madiun	Madiun	Jawa Timur	New in 88/89
3277	Active	RRI Jakarta	Jakarta	DKI Jakarta	Programa Nasional Best from 1000 - 1705
3286	Active	RRI Madiun	Madiun	Jawa Timur	Active in 1989?
3330	Activ?	RDK Sukabumi	Sukabumi	Jawa Barat	Active, but rarely heard in NAM.
3355	Active	RRI Sumenep	Sumenep, Madur	Jawa Timur	Co-chan QRN!!!
3381	active	RRI Malang	Malang	Jawa Timur	Main freq. Others inc:2430, 2450, 3836
3504vv	Activ?	RPDT2 B'uwangi	Banyuwangi	Jawa Timur	May still be active. Var. 3485-3510!
3836	active	RRI Malang	Malang	Jawa Timur	Alt. freq. Others inc:2430, 2450, 3381(main)
3935	Active	RRI Semarang	Semarang	Jawa Tengah	//2490
3976	Active	RRI Surabaya	Surabaya	Jawa Timur	// rarely heard 2377
4087.5	Active	RKPD2 Blitar	Blitar	Jawa Timur	
4163	Activ?	RPDT2 Nganjuk	Nganjuk	Jawa Timur	Unsure if active now
4699v	Active	RKIP Surabaya	Surabaya	Jawa Timur	R. Khusus Informasi Pertanian
4774	Active	RRI Jakarta	Jakarta	DKI Jakarta	Programa Nasional Best from 1000 - 1705
4900	Active	RRI Surakarta	Surakarta	Jawa Tengah	Low power in mornings
4931.6	Active	RRI Surakarta	Surakarta	Jawa Tengah	//rarely heard 2439
5047	Active	RRI Yogyakarta	Yogyakarta	DI Yogya	Key RRI station for Jawa Tengah // rarely heard 2350
6045	Active	RRI Jakarta	Jakarta	DKI Jakarta	Programa Nasional Believed Inactive
7270	Active	RRI Jakarta	Jakarta	DKI Jakarta	Programa Nasional Best from 1000 - 1705
9680	Active	RRI Jakarta	Jakarta	DKI Jakarta	Programa Nasional Best from 1000 - 1705
11770	Active	RRI Jakarta	Jakarta	DKI Jakarta	Programa Nasional Best from 1000 - 1705
11865	Active	RRI Jakarta	Jakarta	DKI Jakarta	Programa Nasional Best from 1000 - 1705 Usually best freq for Prog. Mas.